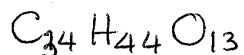


①



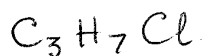
ANSWER KEY

QUIZ #5

Exact mass = 660.2782

= 34 (12.0000) + 44 (1.00747) + 13 (15.9949)

②



Based on	M^{+}	Intensity	
		100%	
	$(M+2)^{+}$	31.9%	⇒ Cl

⇒ $78 - 35 = 43 = 12 \times 3 + 7 \times 1$

or using the exact mass.

$$\frac{78 \times 23.6 + 79 \times 1 + 80 \times 7.55 + 81 \times 0.25}{(23.6 + 1 + 7.55 + 0.25)}$$

③

$0\% = \frac{3 \times 15.9947}{212.0833} = 15.08 \Rightarrow 3$

$C_xH_yO_3$

$12x + 1.0783y = [212.0833 - 15.9947 \times 3]$

⇒ $x \vee y$

Mol. formula: $C_{14}H_{12}O_2$

Structure

