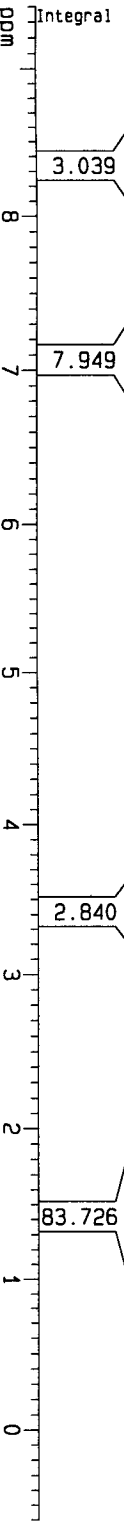


Account No. ct3321
 Jacobsen Ligand

Current Data Parameters
 NAME Jan24-2003
 EXPNO 10
 PROCNO 1

- 8.41501
- 8.38153
- 7.65511
- 7.64722
- 7.41194
- 7.40596
- 7.34385
- 7.26014
- 7.22607
- 7.21075
- 7.20524
- 7.16485
- 7.15923
- 7.12469
- 7.06836
- 6.99626
- 6.89214
- 6.88423
- 6.03369
- 5.29902
- 4.61559
- 4.32308
- 4.07535
- 3.42702
- 3.27368
- 3.15776
- 2.45932
- 2.32205
- 2.00074
- 1.96949
- 1.89352
- 1.87277
- 1.78431
- 1.76069
- 1.73725
- 1.49484
- 1.47106
- 1.45614
- 1.43926
- 1.40705
- 1.33747
- 1.32072
- 1.30253
- 1.27264
- 1.24356
- 1.16875
- 1.14484
- 0.83098



F2 - Acquisition Parameters
 Date_ 20030124
 Time 12.56
 INSTRUM arx400
 PROBHD 5 mm QNP 1H
 PULPROG zg30
 TD 65536
 SOLVENT CDCl3
 NS 8
 DS 0
 SMH 8064.516 Hz
 FIDRES 0.123055 Hz
 AQ 4.0632820 sec
 RG 360
 DW 62.000 usec
 DE 88.57 usec
 TE 300.0 K
 D1 2.00000000 sec
 P1 7.50 usec
 SFO1 400.1324008 MHz
 NUCLEUS 1H

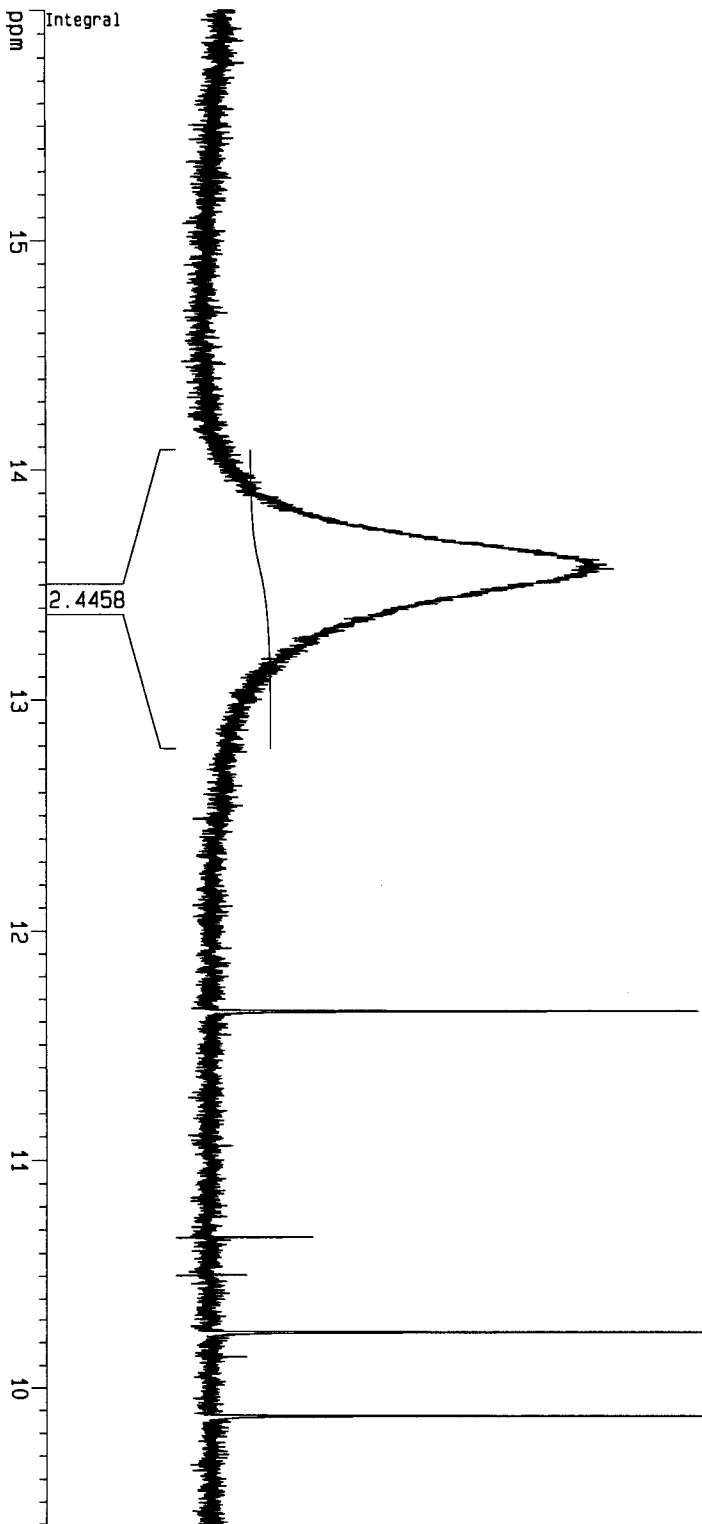
F2 - Processing parameters
 SI 65536
 SF 400.1300173 MHz
 WDW EM
 SSB 0
 LB 0.30 Hz
 GB 0
 PC 1.00

1D NMR plot parameters
 CX 20.00 cm
 F1P 9.400 ppm
 F1 3761.22 Hz
 F2P -0.600 ppm
 F2 -240.08 Hz
 PPMCM 0.50000 ppm/c
 HZCM 200.06500 Hz/cr

ACCOUNT NO. CT3321
 Jacobsen Ligand

ppm
 15.9205
 15.8712
 15.7782

13.9666
 13.5865
 13.5692
 13.3516
 13.2133
 13.0892
 13.0030
 12.8709
 12.7750
 12.5435
 11.6478
 10.6704
 10.2477
 10.1391
 9.8771



Current Data Parameters
 NAME Jan24-2003
 EXPNO 10
 PROCNO 1

F2 - Acquisition Parameters
 Date_ 20030124
 Time 12.56

INSTRUM arx400
 PROBHD 5 mm QNP 1H
 PULPROG zg30

TD 65536
 SOLVENT CDCl3
 NS 8
 DS 0

SWH 8064.516 HZ
 FIDRES 0.123055 HZ

AQ 4.0632820 sec
 RG 360

DW 62.000 usec
 DE 88.57 usec

TE 300.0 K
 D1 2.0000000 sec
 P1 7.50 usec

SFO1 400.1324008 MHz
 NUCLEUS 1H

F2 - Processing parameters
 SI 65536

SF 400.1300173 MHz
 MDW EM
 SSB 0

LB 0.30 HZ
 GB 0
 PC 1.00

1D NMR plot parameters
 CX 20.00 cm
 F1P 16.000 ppm

F1 6402.08 HZ
 F2P 9.400 ppm
 F2 3761.22 HZ
 PPMCM 0.33000 ppm/cm
 HZCM 132.04291 HZ/cm