

## Infrared Assignment Fall 2012

Name of Student:

Student ID:

Section:

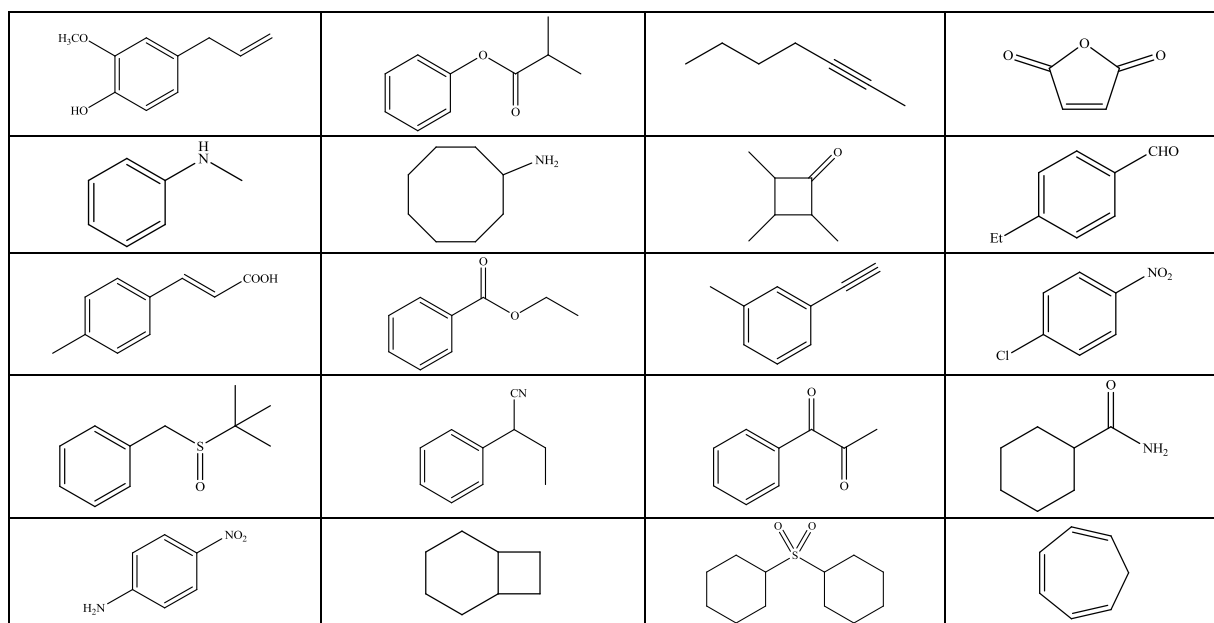
TA: Beijia

Joseph

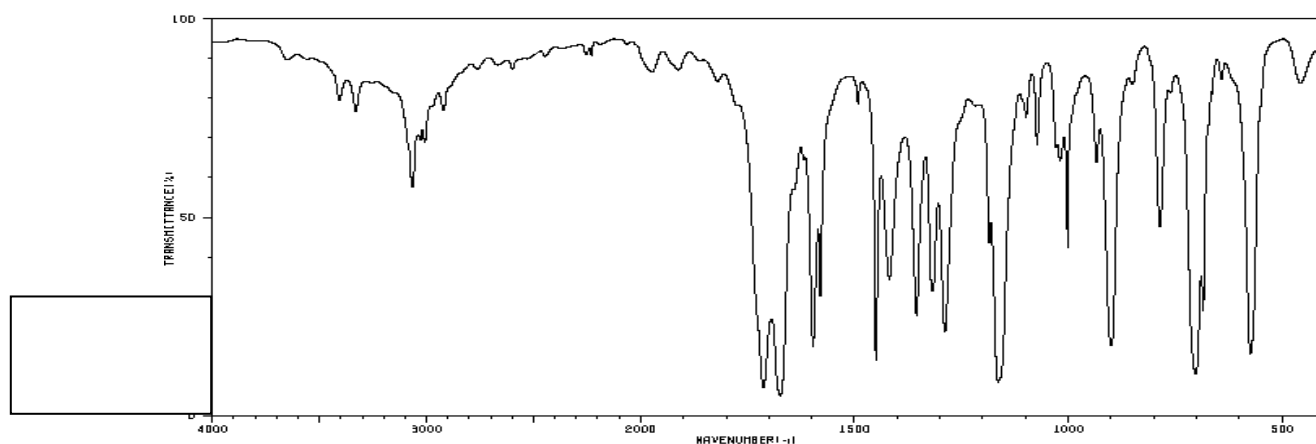
Steven

Score: /40

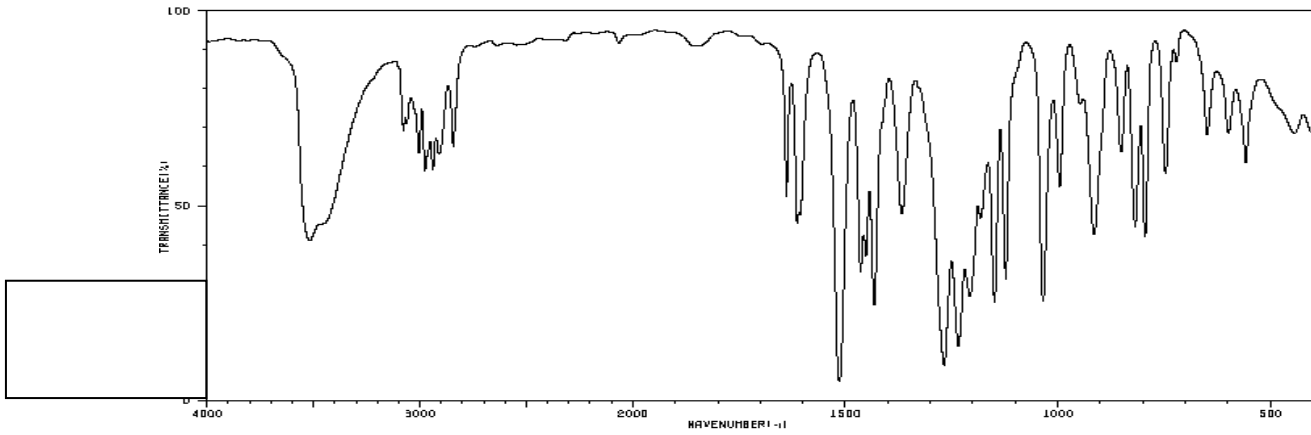
Identify the following spectra. Full credit is only given if the *pertinent* peaks are clearly assigned on the spectrum (3-5 peaks). It is highly advisable to use the tables provided in the SKR (p. 194, 198, 208) to avoid getting confused by tables from different sources. You do not have to indicate the exact wavenumber of the peak. Print the entire assignment (=10 spectra) and turn in the entire package. Label the peaks on the spectrum and place the structure of the compound in the box on the lower left hand corner of the spectrum (from the table below, no numbering scheme). Leave the pages in order and do not print them out double-sided. Staple the assignment on the upper left corner. Circle your TAs name and make sure that you place your name on the assignment. Messy assignments will not receive any credit. Neither will an assignment without a name! If you do not follow directions above, points will be deducted. The assignment is due by **Friday, October 19, 2012 at 5:00 pm** in your instructor's office (YH 3077E) or the grey mailbox in the office suite (on the left side when you enter YH 3077). **No late assignments will be honored.** Good luck! ☺



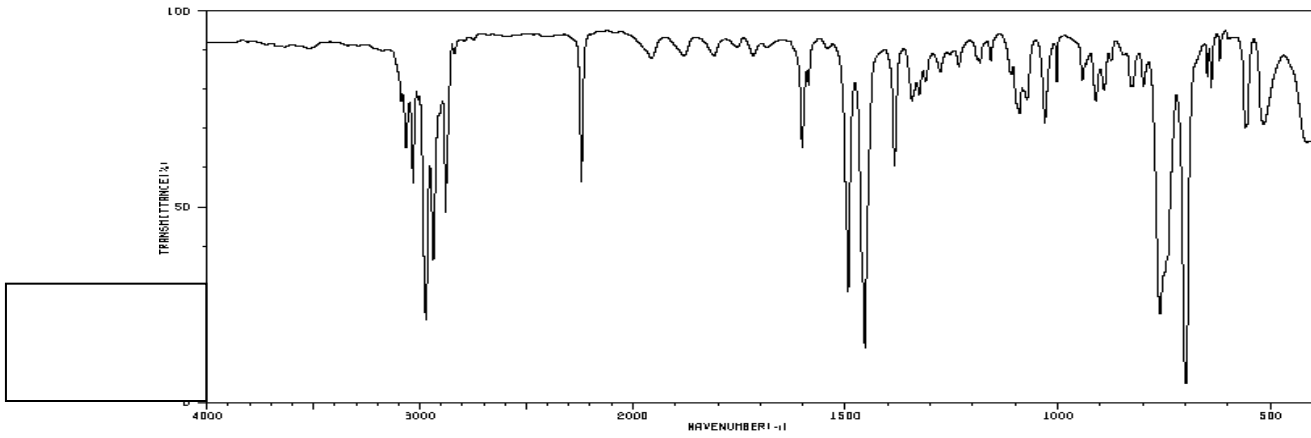
Spectrum 1:



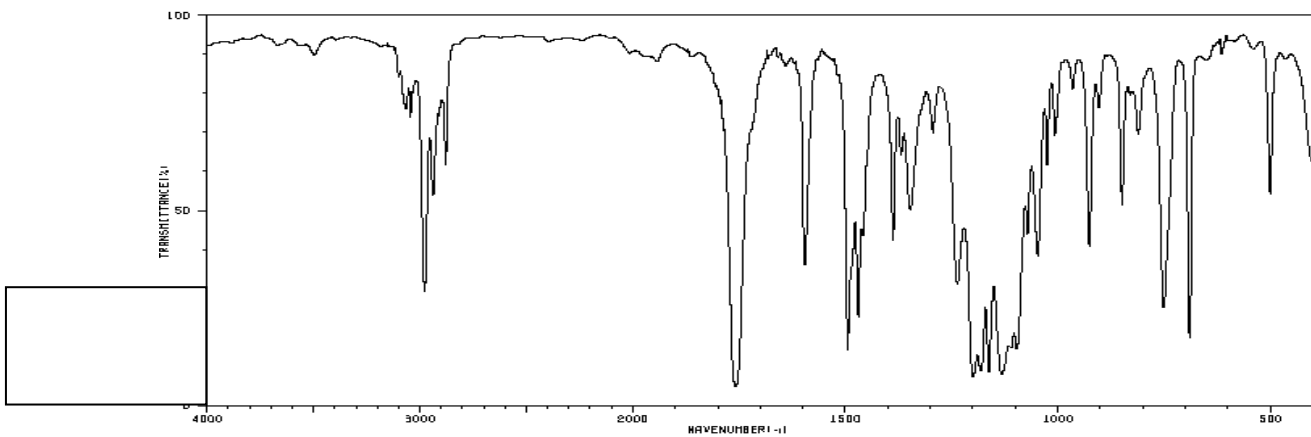
Spectrum 2:



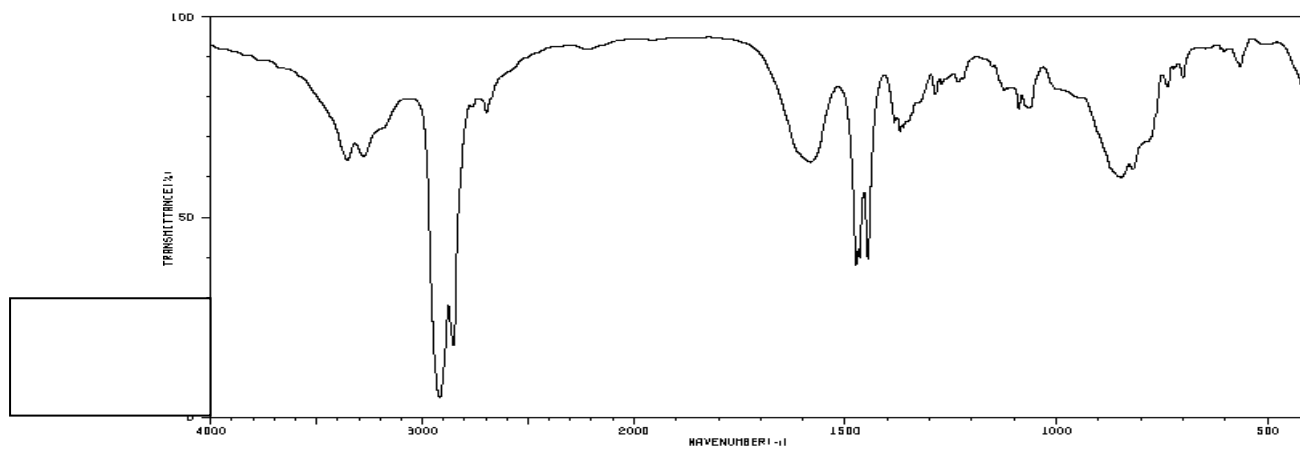
Spectrum 3:



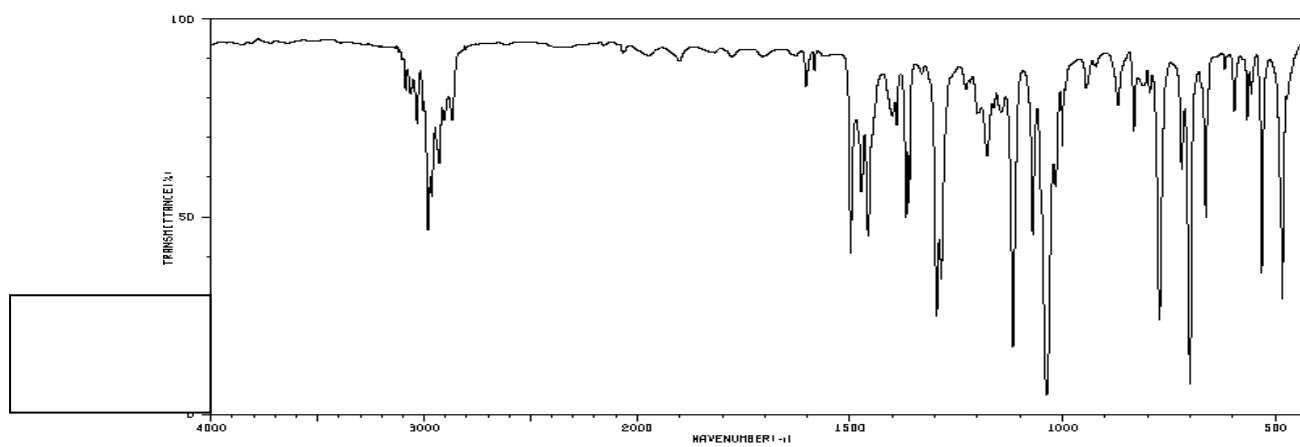
Spectrum 4:



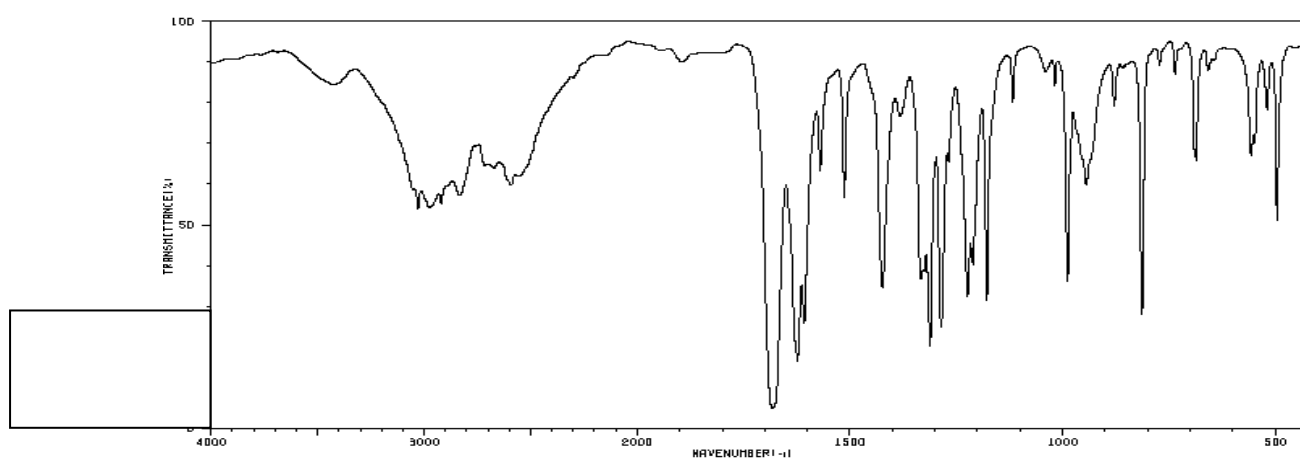
Spectrum 5:



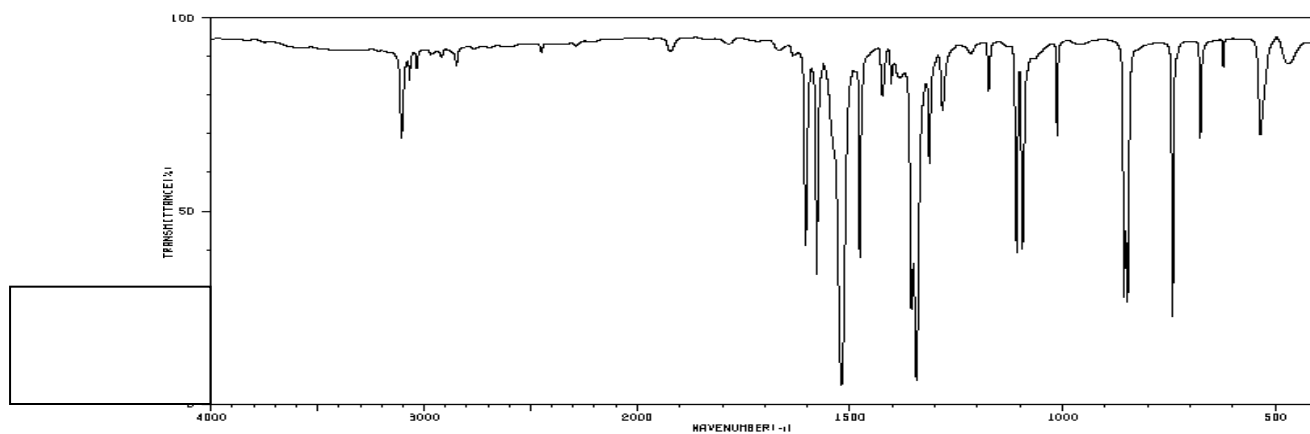
Spectrum 6:



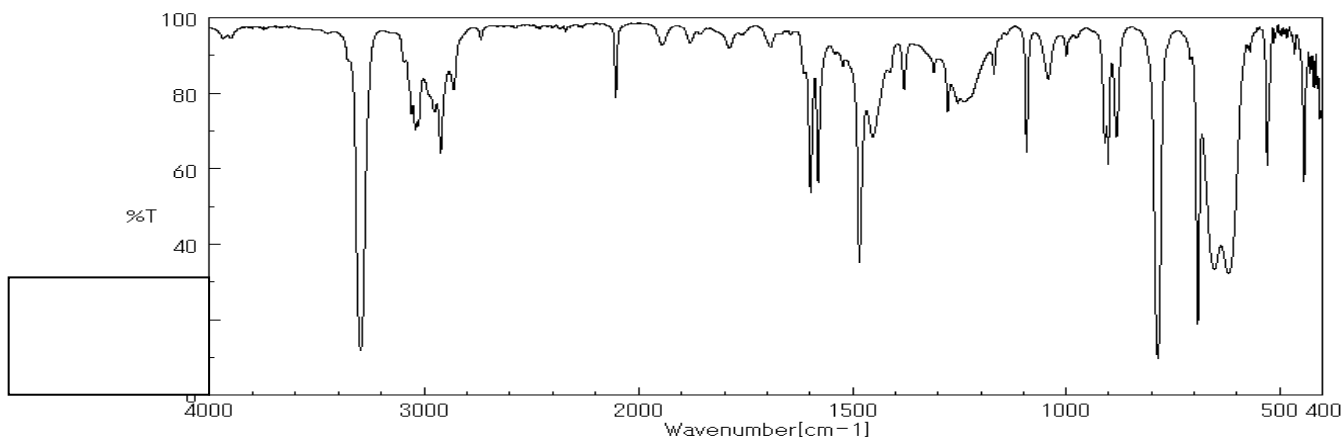
Spectrum 7:



Spectrum 8:



Spectrum 9:



Spectrum 10:

